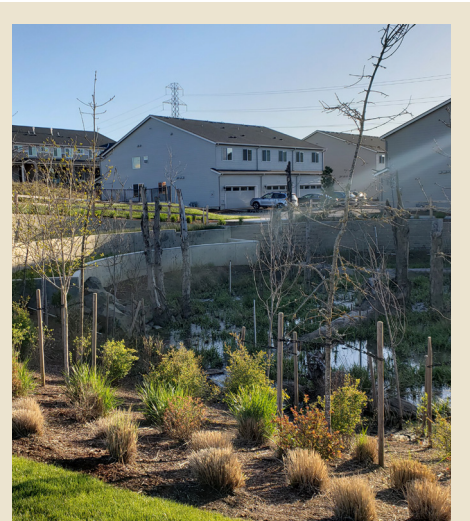


SOUTH BULL MOUNTAIN: REGIONAL STORMWATER SYSTEM STUDY

PLANNING TO SUPPORT FUTURE GROWTH

To support thoughtful environmental planning for our region, Clean Water Services worked with specialized consultants to conduct two parallel regional studies in the South Bull Mountain area. One study is for stormwater; the other is for a sanitary system. As the region develops, careful planning is needed to ensure appropriate infrastructure is in place in each community to protect the environment and serve our growing population.

The studies analyzed technical and on-the-ground data, explored alternatives, and produced recommendations for effective regional stormwater management and sanitary system design. Clean Water Services coordinated with local governments and the community on the process. The studies began in spring 2022 and completed spring 2025. The studies' recommendations influence future stormwater management and sanitary systems and guide infrastructure development.



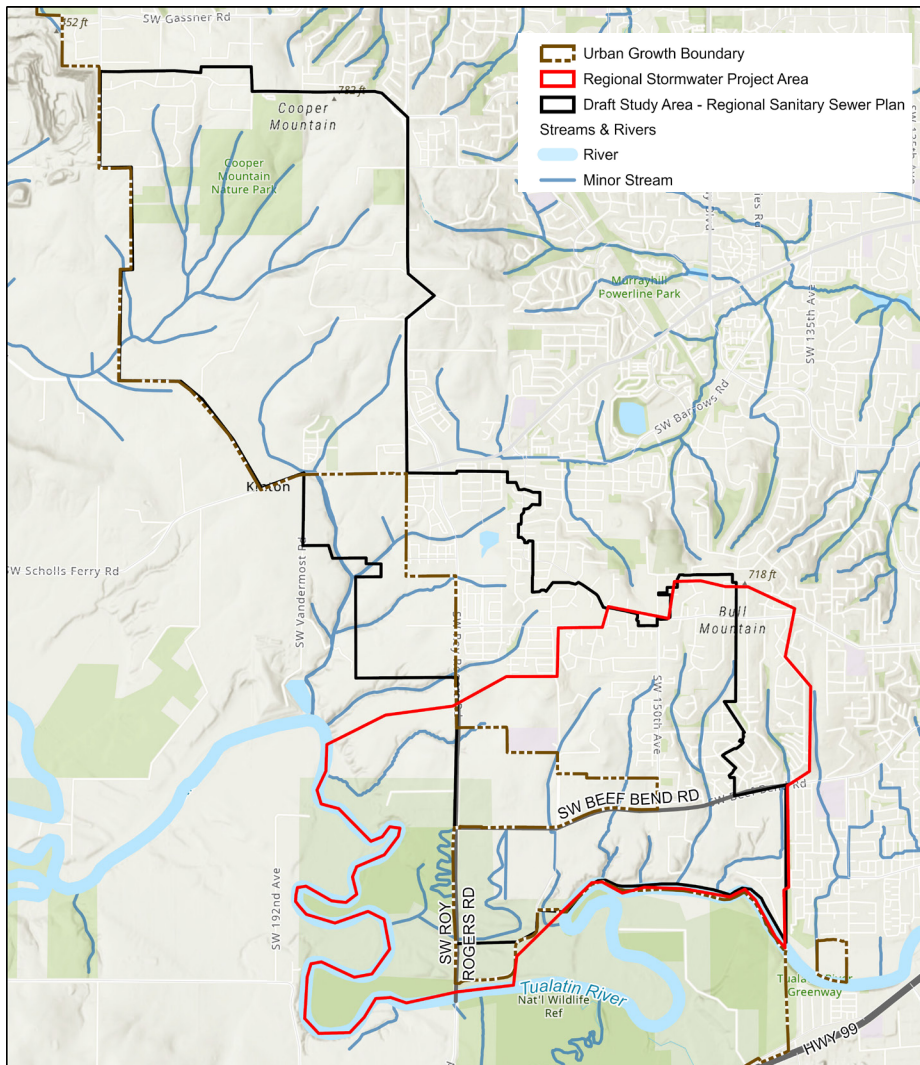
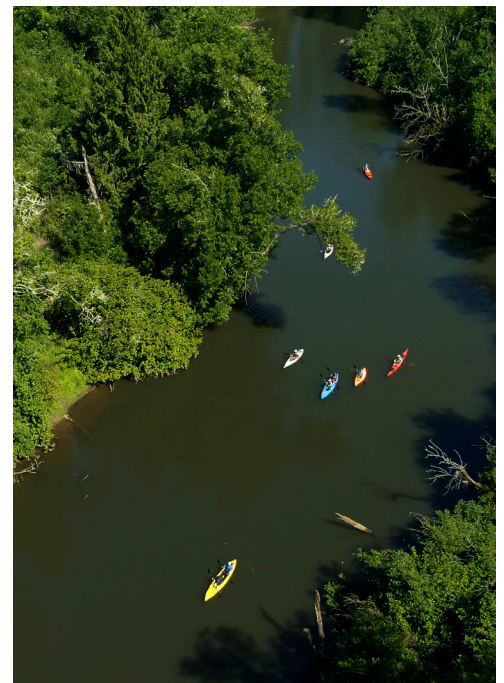
REGIONAL STORMWATER STUDY

Stormwater — the runoff from pavement, roofs, construction, and other developed areas — is an important issue to manage as communities grow. Due to the complexity of the area's geography and all-encompassing nature of stormwater, a regional stormwater strategy is necessary to provide a more comprehensive approach to stormwater management. The study provides technical analysis through fieldwork and exploring. This regional strategy also lays the groundwork for better coordination between local governments and the community. The stormwater study results will be used to determine what options are feasible for stormwater management in the South Bull Mountain area.

Options might include:

- Water quality facilities such as bioswales
- Onsite and street-side planters,
- Detention ponds,
- Instream resiliency, or
- A combination of approaches.

The study also includes recommendations to consider for stream enhancement and retrofits to mitigate existing impacts to local streams, although funding for these strategies are not identified. This stormwater study is one element of larger transportation and land use planning processes led by individual cities and counties.



CleanWater Services

2550 SW Hillsboro Highway
Hillsboro, Oregon 97123
503.681.3600
cleanwaterservices.org