

# SOUTH BULL MOUNTAIN: SANITARY SYSTEM STUDY

JUNE 2025



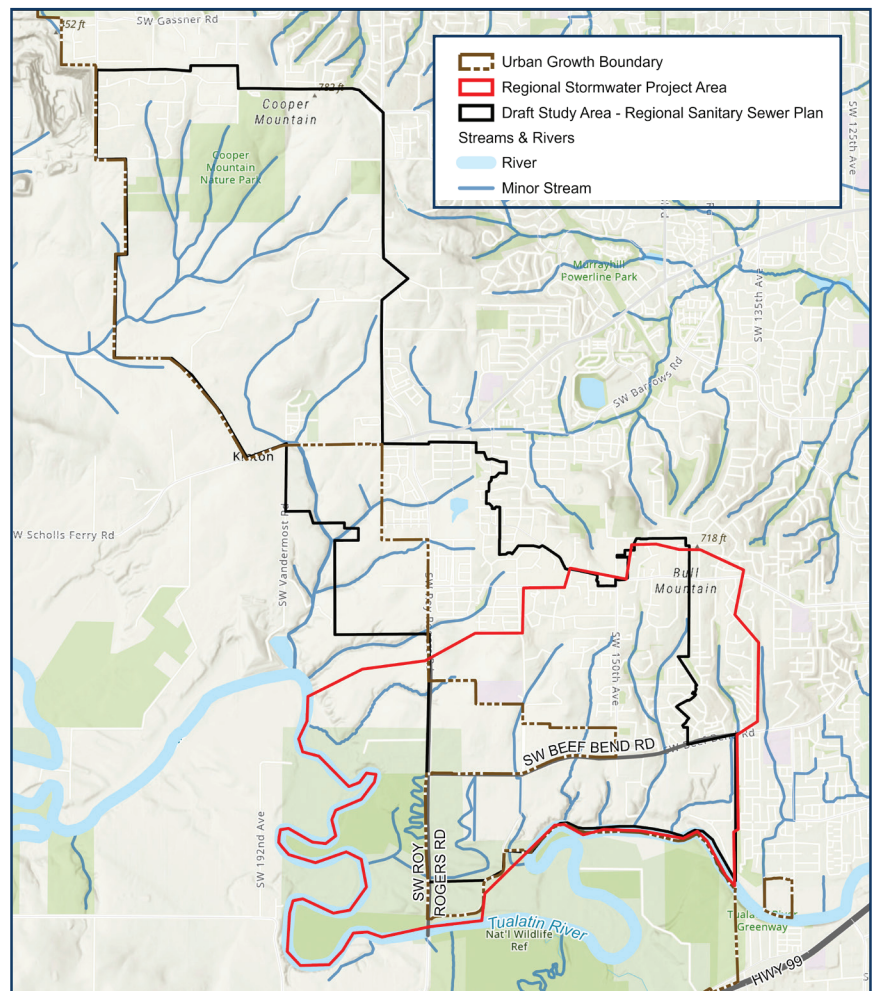
## PLANNING TO SUPPORT FUTURE GROWTH

To support thoughtful environmental planning for our region, Clean Water Services worked with specialized consultants to conduct a regional sanitary system study. As the region develops, careful planning is needed to ensure appropriate infrastructure is in place in each community to protect the environment and serve our growing population.

The study analyzed technical and on-the-ground data, explored alternatives, and produced recommendations for effective regional sanitary system design. Clean Water Services is coordinated with local governments and the community on the process. The study began in spring 2022 and completed summer 2023. The study recommendations influence future sanitary systems and guide infrastructure development.

## SANITARY SYSTEM STUDY

The regional sanitary system study, which covers a slightly different geographic area to capture the upstream sanitary drainage basin (including areas served by pump stations), provides recommendations to manage future regional sanitary needs as this area develops.



The study analyzes areas that are being planned for development:

- Two unincorporated areas within Washington County to the west and south of Bull Mountain
- Tigard's future River Terrace West
- South Concept Plan (the urban reserve area on Tigard's west boundary)
- King City's primary plan for the Beef Bend South area (also known as Kingston Terrace)
- A system to carry the new flows from the adjacent Cooper Mountain Tile Flat Planning Area