

# SOUTH BULL MOUNTAIN: REGIONAL STORMWATER AND SANITARY SYSTEM STUDY

FEBRUARY 2024

## PLANNING TO SUPPORT FUTURE GROWTH

To support thoughtful environmental planning for our region, Clean Water Services worked with specialized consultants to conduct two parallel regional studies in the South Bull Mountain area. One study is for stormwater; the other is for a sanitary system. As the region develops, careful planning is needed to ensure appropriate infrastructure is in place in each community to protect the environment and serve our growing population.

The studies analyze technical and on-the-ground data, explore alternatives, and produced recommendations for effective regional stormwater management and sanitary system design. Clean Water Services is coordinated with local governments and the community on the process. The studies began in spring 2022 and completed summer 2023. The studies' recommendations influence future stormwater management and sanitary systems and guide infrastructure development.

## STORMWATER STUDY

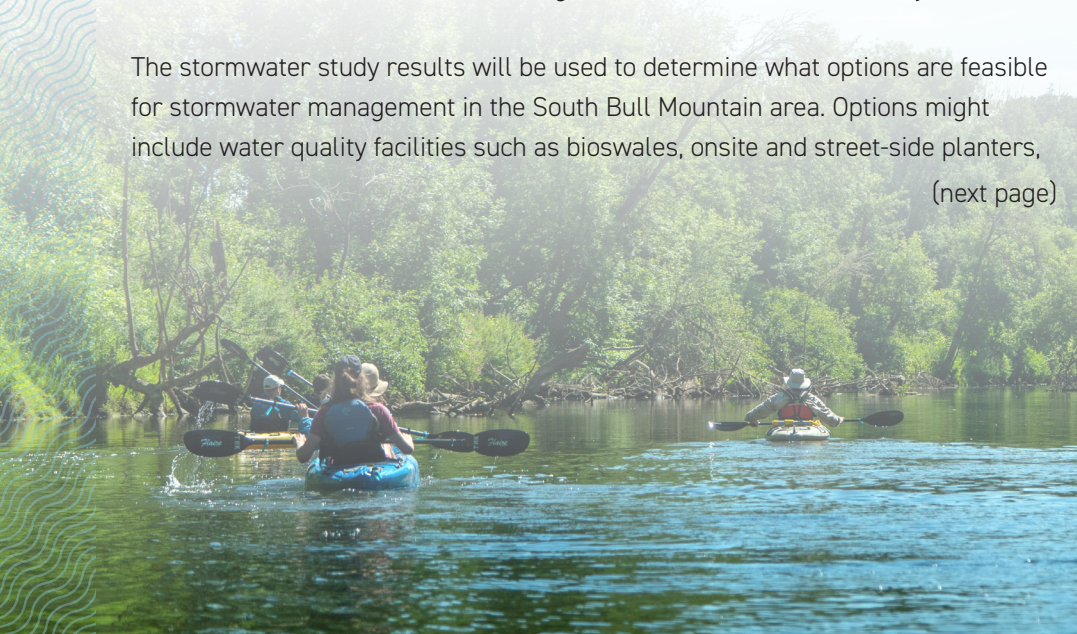
Stormwater — the runoff from pavement, roofs, construction, and other developed areas — is an important issue to manage as communities grow. Due to the complexity of the area's geography and all-encompassing nature of stormwater, a regional stormwater strategy is necessary to provide a more comprehensive approach to stormwater management. The study provides technical analysis through fieldwork and exploring. This regional strategy also lays the groundwork for better coordination between local governments and the community.

The stormwater study results will be used to determine what options are feasible for stormwater management in the South Bull Mountain area. Options might include water quality facilities such as bioswales, onsite and street-side planters, (next page)



## THE WATER REUSE IMPERATIVE

Water reuse is a high-quality water supply resource that is highly regulated by the Oregon Department of Environmental Quality for approved beneficial uses. Clean Water Services has identified the importance of diversifying the water resource portfolio for our region and is collaborating with local businesses, other water utilities, and environmental and regulatory partners to expand water reuse opportunities. The Water Reuse Program supports environmental restoration, offsets irrigation demands, and conserves potable supply. Expanding reuse water demand is vital for protecting the Tualatin River Watershed, which is impacted by population growth and increasing seasonal weather variations.





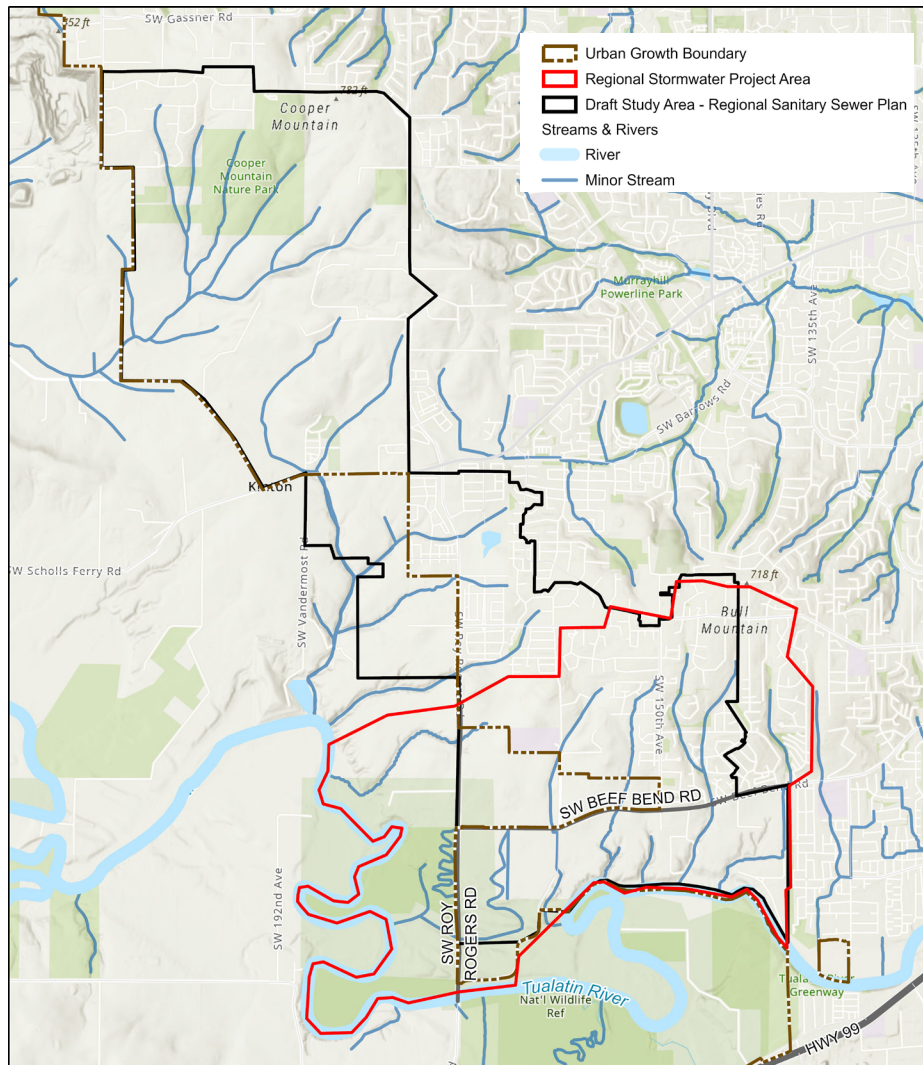
detention ponds, instream resiliency, or a combination of approaches. The study also includes recommendations to consider for stream enhancement and retrofits to mitigate existing impacts to local streams, although funding for these strategies are not identified. This stormwater study is one element of larger transportation and land use planning processes led by individual cities and counties.

## SANITARY SYSTEM STUDY

The regional sanitary system study, which covers a slightly different geographic area to capture the upstream sanitary drainage basin (including areas served by pump stations), provides recommendations to manage future regional sanitary needs as this area develops.

The study analyzes areas that are being planned for development: Two unincorporated areas within Washington County to the west and south of Bull Mountain, Tigard's future River Terrace West and South Concept Plan (the urban reserve area on Tigard's west boundary), and King City's primary plan for the Beef Bend South area (also known as Kingston Terrace) as well as a system to carry the new flows from the adjacent Cooper Mountain Tile Flat Planning Area.

The study integrates local sanitary system planning concepts with existing infrastructure to recommend the best design for an effective system to serve the growing community.



CleanWater Services

2550 SW Hillsboro Highway  
Hillsboro, Oregon 97123  
503.681.5100  
cleanwaterservices.org