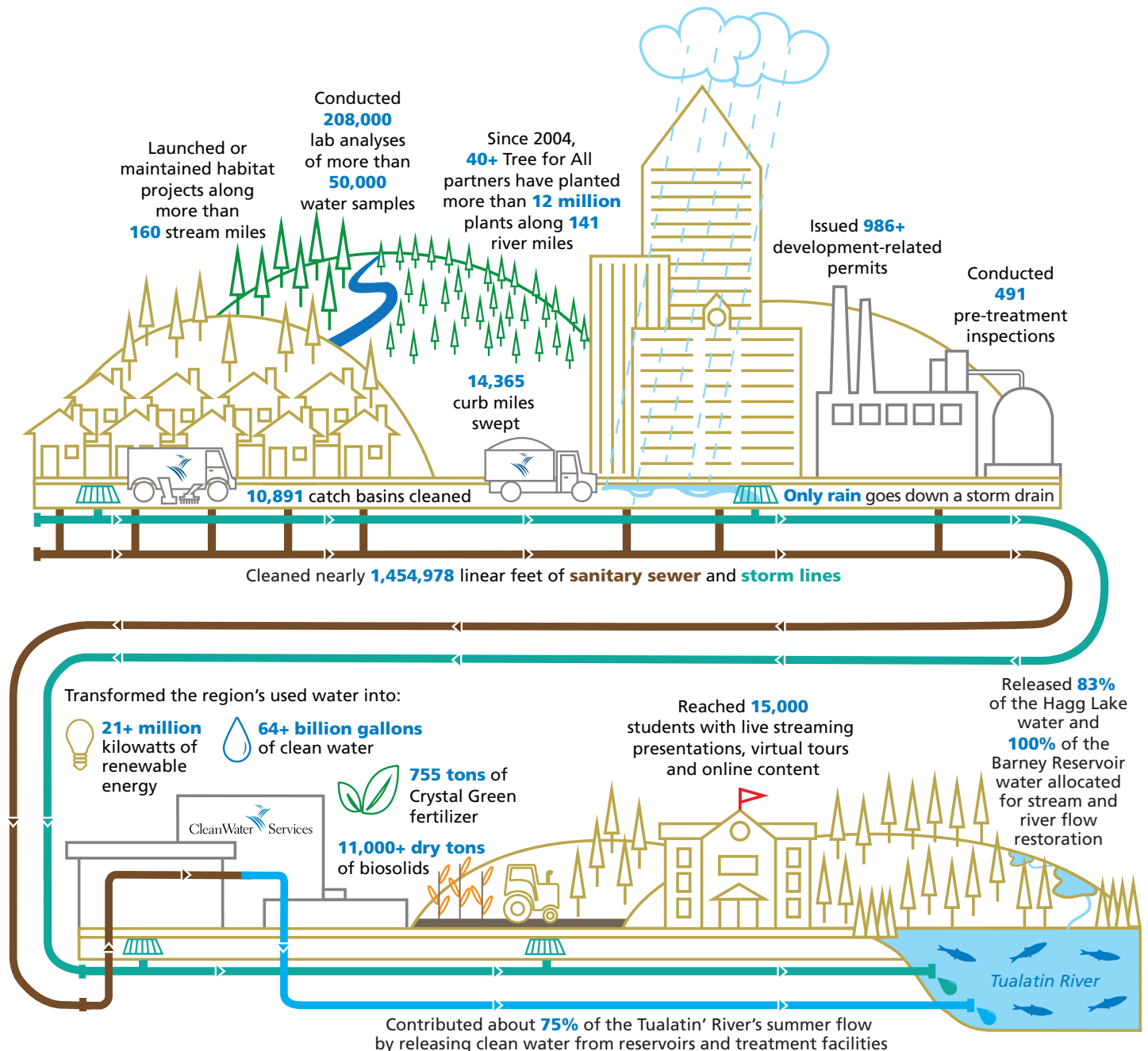


# CleanWater Services At a Glance



Everything we do at Clean Water Services aims to protect public health, while enhancing the natural environment of the Tualatin River Watershed. Combining science and nature, we work in partnership with others to safeguard the river's health and vitality, ensure the economic success of our region, and protect public health for more than 600,000 residents and businesses in urban Washington County.



Above figures are for Fiscal Year 2019-2020 unless otherwise noted

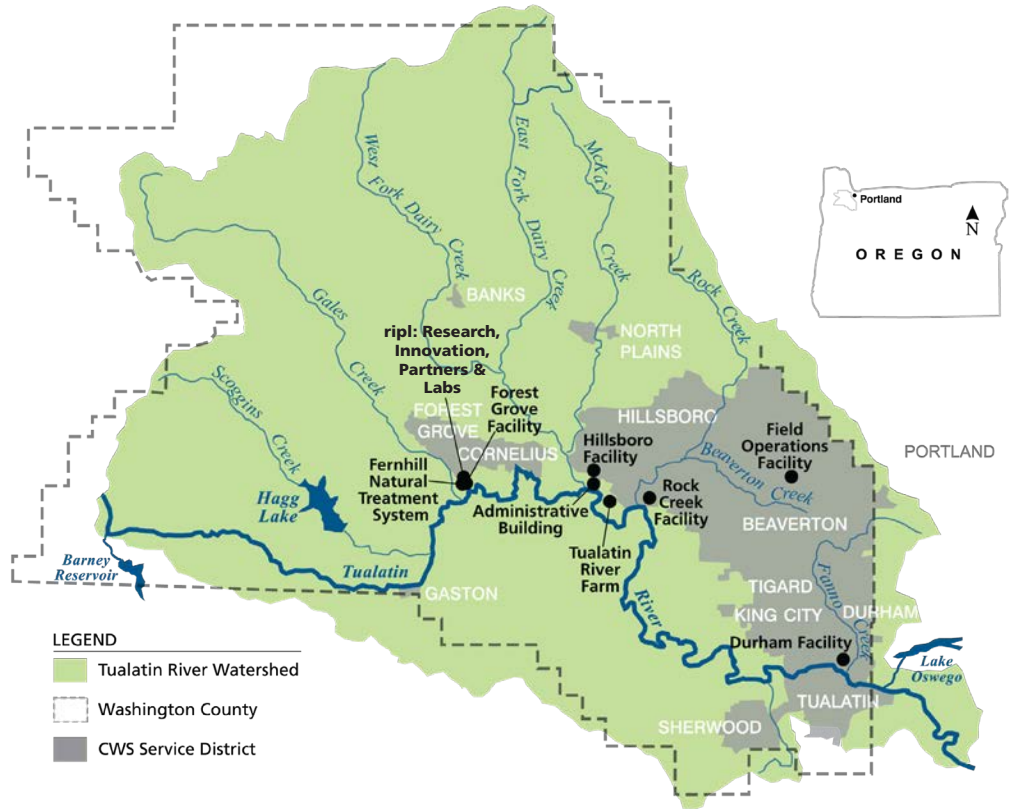
### Board of Directors

Our Board is the Washington County Commissioners:

- Kathryn Harrington, Chair (at large)  
Term expires - 12/22
- Nafisa Fai (District 1)  
Term expires - 12/24
- Pam Treece (District 2)  
Term expires - 12/22
- Roy Rogers (District 3)  
Term expires - 12/24
- Jerry Willey (District 4)  
Term expires - 12/22

### Chief Executive Officer

- Diane Taniguchi-Dennis

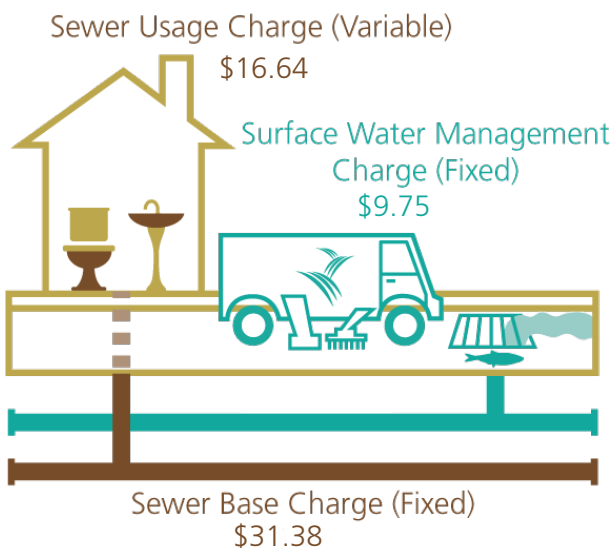


### Advisory Commission

This 15-member Advisory Commission is appointed by the Board of Directors to serve four-year terms. The purpose of the Commission is to review, discuss and make recommendations to the Board of Directors on major policy issues and programs. A subcommittee hears and acts on appeals regarding implementation of various programs, standards and rules. The Advisory Commission meets monthly. For more information, go to [cleanwaterservices.org/CWAC](http://cleanwaterservices.org/CWAC).

### 2020-21 Rates and Charges

#### Typical monthly costs for a single family home



Typical combined average monthly bill = \$57.77

One-time system development charges, per dwelling unit:

Sanitary sewer SDC	\$6,085
Surface water management SDC	\$ 585

CWS rates are among the lowest in the region, and the District is committed to keeping rate increases reasonable and predictable while making the investments necessary for efficient operation of complex systems. Learn more at [cleanwaterservices.org/rates](http://cleanwaterservices.org/rates).



Revised 07/2021