



# STREET SWEEPING



## Did you know?

- In urban Washington County, wastewater and stormwater systems are separate. Water that flows into neighborhood storm drains goes directly into streams without treatment.
- Flooding and pollution problems in storm drains, gutters, catch basins, urban detention areas, swales and wetlands cause water quality in neighborhood streams and the Tualatin River to deteriorate.
- Even “natural” materials like leaves and yard clippings can contribute to pollution and flooding problems if they are dumped into streams and drainage areas.

When it rains, pollution runs into storm drains and harms our rivers and streams. Street sweeping is part of how Clean Water Services and its member cities manage surface water and protect the Tualatin River. Street sweeping reduces drainage problems and improves water quality. This program is funded by stormwater/surface water fees. The average household pays \$9.25 per month while larger properties may pay more.

## What we sweep

Our street sweepers are designed to pick up naturally occurring debris. Please do not pile leaves or other yard debris which can lead to blocked storm drains and slick roads.

## When we sweep

Our Field Operations group has a schedule for sweeping curbed and guttered streets in unincorporated Washington County within the CWS service district. We sweep at approximately the same time each month; however, delays may occur due to weather and vehicle maintenance.

Contact your city's Public Works department for street sweeping schedules for locations within city limits.

## Where we sweep

We sweep publicly owned commercial and residential streets. Our street sweeping equipment only works on streets with curbs and gutters. They guide the brushes, while protecting yards, cars and windows from the debris that gets kicked up. Each resident of the community contributes to the cost of the program because we all use buildings, streets, parking lots and sidewalks — even if we live on streets without curbs or gutters.

## How you can help

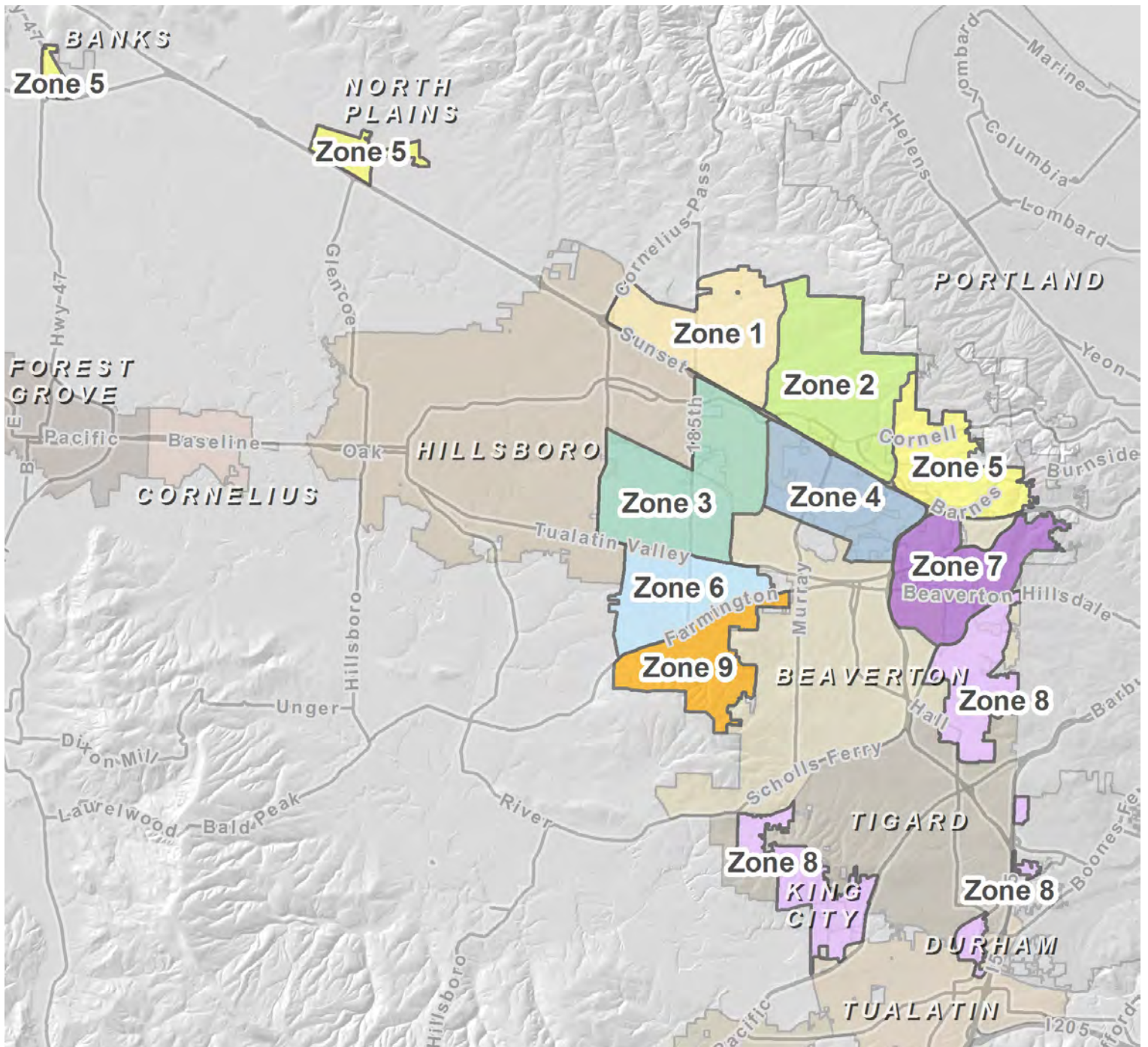
Trim trees and bushes to avoid extending into the street. Provide a 12-foot clearance; move basketball backboards as needed. When possible, move your vehicles off the street before street sweeping day so we can sweep as continuous an area as possible. Remind your neighbors of the street sweeping schedule so they can move their vehicles.

## Resources

- Learn more at [cleanwaterservices.org/stormwater](https://cleanwaterservices.org/stormwater)
- Call 503.547.8115 for a recording of scheduled sweeping areas.
- Find your address on our street-sweeping map: [arcg.is/1M7gv15](https://arcg.is/1M7gv15)

Everything we do at Clean Water Services aims to protect public health while enhancing the natural environment of the Tualatin River Watershed.

# STREET SWEEPING AREAS



View the interactive map to determine your specific location at [arcg.is/1M7gv1S](https://arcg.is/1M7gv1S). Approximate zone boundaries are as follows:

- Zone 1 - Hwy 26 north to NW West Union Rd. and NW Brugger Rd.; NW Cornelius Pass Rd. east to NW Bethany Blvd. and NW Kaiser Rd.
- Zone 2 - Hwy 26 and SW Barnes Rd. north to county line; NW Bethany Blvd. and NW Kaiser Rd. east to NW 113th Ave. and NW Cedar Hills Blvd.
- Zone 3 - Tualatin Valley Hwy. north to Hwy 26; SW Cornelius Pass Rd. east to SW 170th and NW 158th Ave.
- Zone 4 - SW Jenkins Ave. and W Baseline Rd. north to Hwy 26; 158th Ave. east to Hwy 217.
- Zone 5 - Hwy 26 north to county line; NW 113th Ave. east to county line; City of Banks; City of North Plains.
- Zone 6 - SW Farmington Rd. north to SW Tualatin Valley Hwy.; SW 209th Ave. east to SW 160th Ave.
- Zone 7 - SW Scholls Ferry Rd. north to Hwy 26; Hwy 217 east to county line.
- Zone 8 - City of Tualatin line north to SW Barrows Rd.; SW Beef Bend Rd., SW 150th Ave. and SW 137th Ave. east to City of Tigard; SW Spruce Ave. north to Garden Home; SW Oleson Rd. east to county line; Southwood neighborhood; City of Durham.
- Zone 9 - SW Gassner, SW Kemmer Rd. and SW Wier Rd. north to SW Farmington Rd.; SW Grabhorn Rd. east to Beaverton city limits.