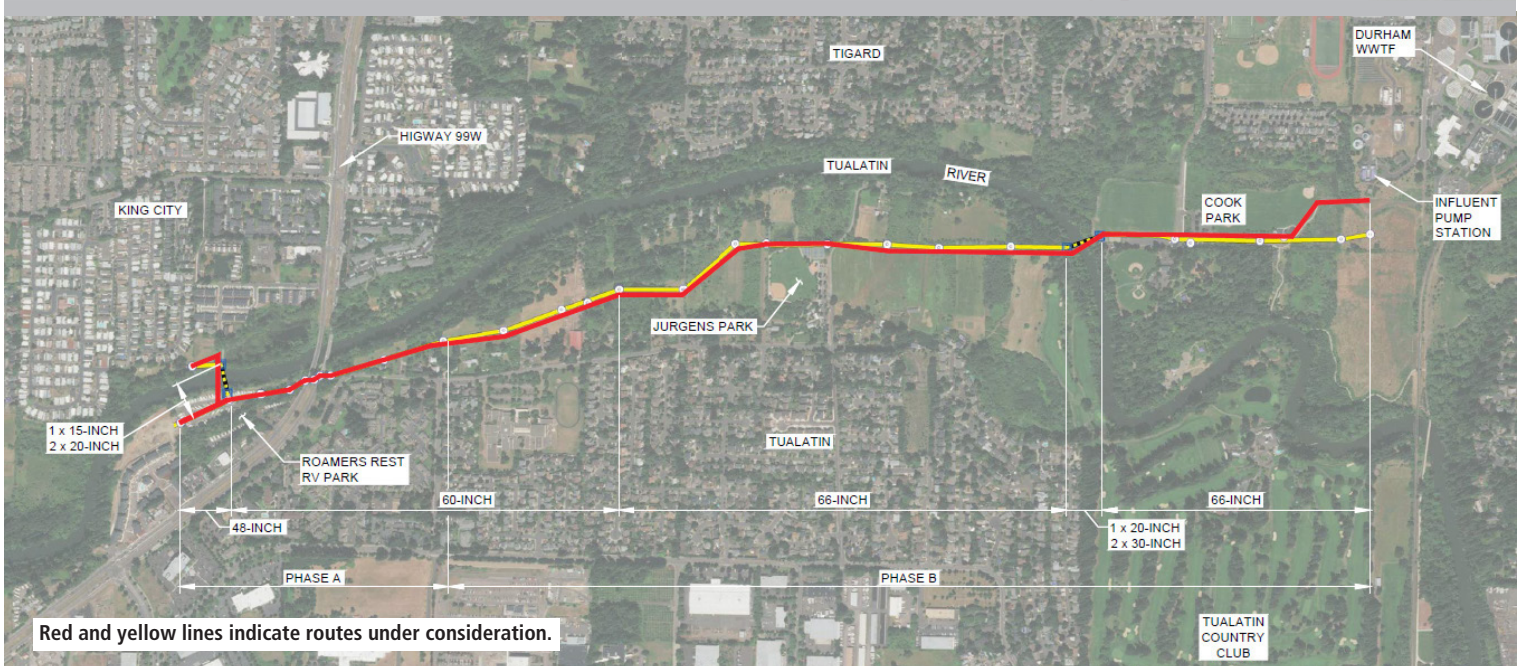




TUALATIN INTERCEPTOR AND SIPHON IMPROVEMENTS



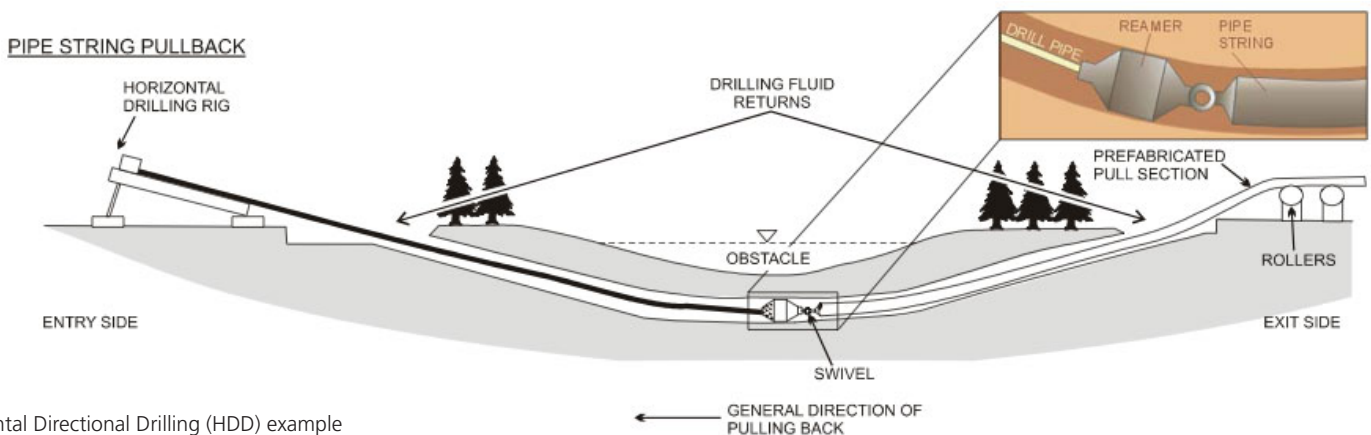
The Tualatin Interceptor serves the cities of King City, Tualatin, Tigard and Sherwood, and directs flows into the Durham Advanced Wastewater Treatment Facility. This project will replace the original interceptor, which was constructed in 1974 and which has reached its useful life, with seismically resilient pipe that is better suited for the corrosive environment within the pipeline. When completed, this \$30M upgrade will provide a pipeline which will handle capacity through 2040.

Construction will begin in early fall 2018 and last through late winter 2019. Clean Water Services and the Design/Builder are committed to impacting the smallest possible footprint in the park during construction.

The new pipe will follow the existing path from the east side of Cook Park through the parking lot. At the sports courts the pipeline will be installed under the Tualatin River using Horizontal Direction Drilling. (See image below.)

In the next few weeks informational signs will be installed in the park indicating the days when the trails in the park will be impacted.

Clean Water Services chose a Progressive Design Build style of procurement because it offers a more collaborative process and innovative approach, providing the best value to ratepayers. Mortenson was selected as the Design/Builder.



Horizontal Directional Drilling (HDD) example