

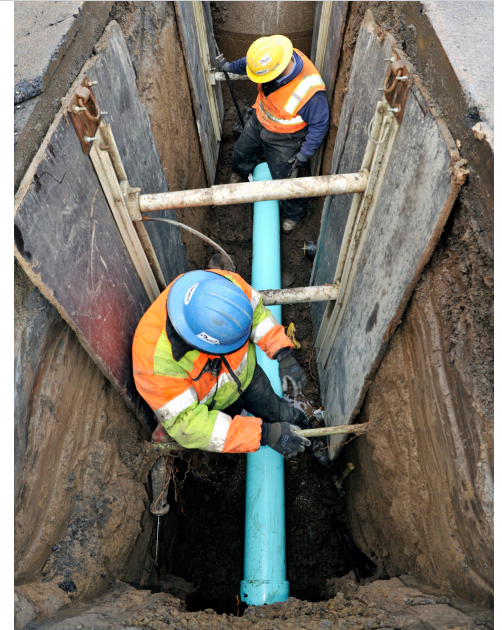
COMPARISON: LIDs AND DISTRICT-SPONSORED RDs



Some neighborhoods or developing areas in urbanized Washington County lack services such as streetlights, drainage infrastructure or sanitary sewers. Because these services, or “improvements,” provide a benefit to specific properties, they are not funded from general funds or taxes. Clean Water Services offers two programs to assist property owners who are exploring ways to transition from septic systems to sanitary sewers.

Reimbursement Districts (RD) and Local Improvement Districts (LID) Comparison of Key Elements

Topic	RD	LID
Required timeline to connect to sewer	Generally no required timeline	Required within 3 years (extensions to 10 years possible)
Additional financing available if connection is made within 6 months	Up to \$5000 in plumbing costs	Up to \$2000 in plumbing costs
Incentive to connect within 1 year of sewer availability	None	Waive administrative and engineering costs (approximately 15% savings)
Documentation of owner costs	Notice of RD charge to connect to the sanitary sewer is recorded and becomes discoverable in a title search	LID assessment becomes a property lien until paid in full
Manner in which unpaid RD charge or LID assessment grows	Accrues at a variable inflationary index	Accrues at fixed rate established at the formation of the LID
Property owner involvement	Neighborhood meetings, public hearings	Neighborhood meetings, ballot, public hearings
Authorization Required	CWS Board of Directors can direct construction of the project with or without prior public involvement	Negative vote by more than 50% of the owners who also represent more than 50% of the benefited area prevents the Board from forming the LID unless there is a need to alleviate a local health hazard



Resources

Visit cleanwaterservices.org/permits-development for additional information, including these fact sheets:

- Septic-to-Sewer
- Sanitary Local Improvement Districts
- Reimbursement District

Everything we do at Clean Water Services aims to protect public health while enhancing the natural environment of the Tualatin River Watershed.