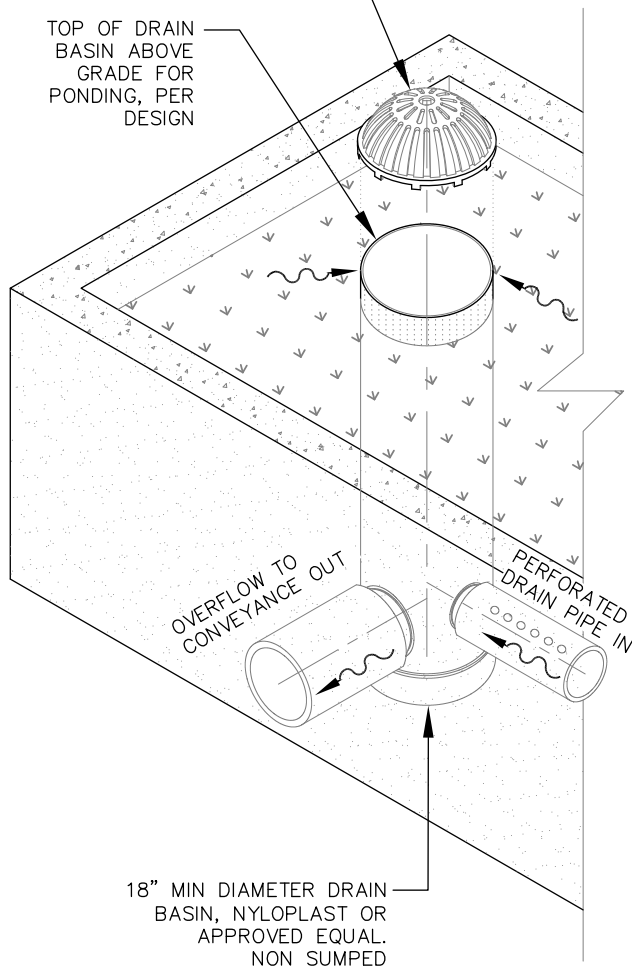


OVERFLOW STRUCTURE

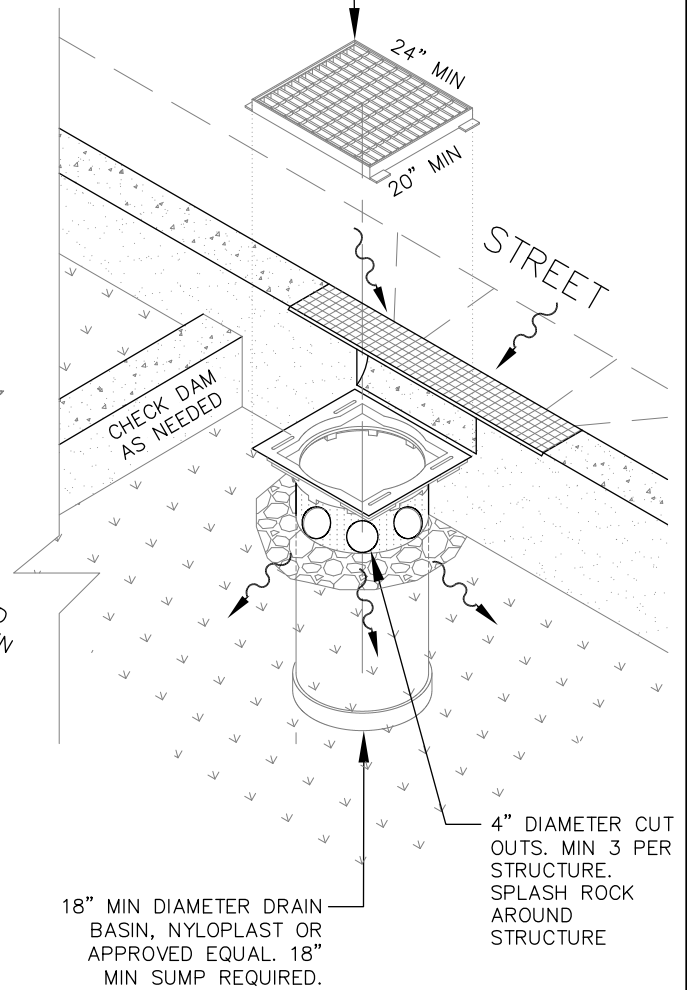
18" MIN DIAMETER DUCTILE IRON BEEHIVE STYLE/DOME GRATE, OR APPROVED EQUAL

TOP OF DRAIN BASIN ABOVE GRADE FOR PONDING, PER DESIGN



INLET STRUCTURE

20" X 24" MIN DUCTILE IRON FLAT GRATE, OR APPROVED EQUAL



NOTES

1. PLACE STRUCTURE ON 3/4" TO 0" BASE ROCK PLACED OVER NATIVE SUBGRADE.

OVERFLOW/INLET
STRUCTURE

DRAWING NO. 407

LIDA
HANDBOOK

06-16

CleanWater  Services